



**SMART VIDEO
SURVEILLANCE**



**ACCESS
CONTROL**



**FRAUD
PREVENTION**



**TRACEABILITY AND
ASSET CONTROL**



**ENERGY
EFFICIENCY**



**BUSINESS
INTELLIGENCE**



**SIMPLIFY DAY-TO-DAY
OPERATIONS**

SYSTEMS INTEGRATION PLATFORM



Are you ready to face your Digital Transformation? ►

MAKE THE RIGHT DECISION EVERY TIME

Why implement a systems integration platform in your organization?

A systems integration platform is a set of tools and technologies designed to connect, coordinate and unify different applications and systems from a single solution to improve operational efficiency.

These platforms are essential in modern business environments, where the diversity of systems and applications requires agile and effective integration to optimize operations and decision making.

A systems integration platform enables optimized security and improved operational management. Through advanced analytics, it uses algorithms to detect suspicious patterns and critical events in real time. In addition, the automation of responses ensures immediate action in the event of incidents, such as the activation of alarms or the blocking of areas, improving efficiency through the automatic coordination of systems. It also includes tools for incident management, facilitating task assignment, monitoring and notification.

Finally, reporting and auditing allows the effectiveness of systems to be evaluated, optimizing processes and ensuring regulatory compliance. All this is integrated into an easy-to-configure and scalable solution, avoiding interoperability problems in the future.



► Differentials



INTEROPERABILITY

Allows the integration of heterogeneous systems from different manufacturers in a smooth and efficient manner.



DATA TRANSFORMATION

Converts data from one format to another to ensure consistency and compatibility between systems.



PROCESS AUTOMATION

Process automation allows repetitive tasks involving several systems to be performed on their own, reducing time and errors.



MONITORING AND MANAGEMENT

Monitors the status and performance of integrations to ensure their proper functioning.



WORKFLOW MANAGEMENT

Coordinates and automates the necessary systems to work together following a previously established plan or flow.



SCATI VISION SOFTWARE LICENSE

Allows any professional operator to exploit all the functionalities needed.

ALL YOUR SYSTEMS MANAGED FROM A SINGLE APPLICATION

The SENTRY SUITE is a systems integration platform designed to provide users with a comprehensive solution through which they can manage in a simple, efficient and unified way all the information coming from their different security and automation subsystems.



SCATI SENTRY is a centralized solution that combines several security elements (alarm and intrusion systems, access control devices and video surveillance), and also allows the management of energy efficiency as well as automation and control systems for intelligent buildings.

Either through standard market protocols or through customized integrations, SCATI SENTRY supports the integration of different subsystems from different manufacturers. In addition, it supports industrial protocols such as Modbus or Bacnet and also others related to the Internet of Things (IoT), such as MQTT and CoAP.

This integrated management makes it possible to create action plans for possible incidents, manage the building's planimetry and integrate with Google Maps and Google Street View, with HTTPS (TLS) secure communications.



CCTV



Access control



Alarms and Intrusion



Fire Detection



Building Management System



Intercoms



IoT Systems



Workflows

EFFICIENCY AND SAFETY SMARTLY INTEGRATED

SCATI SENTRY provides an intuitive interface with visual tools that simplify system configuration. It supports automation of complex workflows and centralized management of integrations, along with efficient performance that adapts to dynamic and growing environments.

SCATI SENTRY is the platform that ensures that system integration is differentiated and stands out from others, and therefore has a few key features and values that ensure its effectiveness, scalability and ease of use.



Open, flexible and scalable

Integrate, unify and add as many systems as your organization requires over time in a holistic manner.



Ease of use

Have an intuitive and easy-to-use user interface that simplifies day-to-day management for users.



Customizable

SCATI SENTRY adapts to each installation to offer an experience tailored to the internal operations of the users.



Traceability

Ability to track and audit all activities and events, for further incident investigation and accountability purposes.



Incident management

Provides effective tools for incident management, including tasking, tracking and notification.



Response automation

Configure automatic responses to specific events, such as triggering alarms or blocking areas, for immediate action.



Procedures

Could create specific procedures for responding to events that occur at your facility.



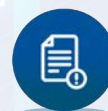
Advanced analytics

Data analysis using advanced algorithms to detect suspicious behaviour patterns and critical events in real time.



Return on investment

Unified management of your systems on a single platform reduces management time.



Reporting and auditing

Generate detailed reports to evaluate the efficiency of the systems, thus allowing to correct or optimize internal procedures.

SCATI SENTRY FUNCTIONALITIES



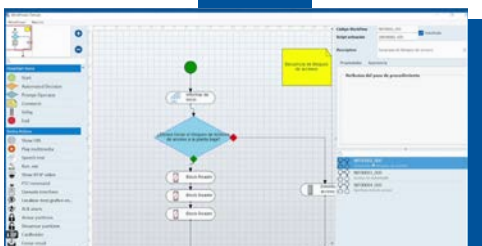
Customization of installations and maps

Import of customized files with still images, infographics or maps to create installations where to place the different safety and environmental elements. It also allows the geolocation of the different cameras using Google Maps or Side Views, being able to position the cameras and have immediate access to the visualization of their images in real time.



Automations

SCATI SENTRY can manage signals from external elements (sensors, cameras, etc.) that act as inputs to the system. The outputs, on the other hand, correspond to actions executed on physical devices in the installation, such as access control or water pumps. These outputs can be automatic or manual.



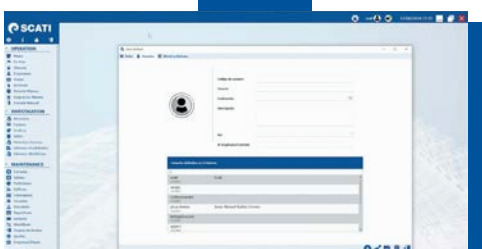
Creation of procedures and workflows

Workflows activate previously created execution tasks for incident management. They are a set of pre-established actions, processes and rules according to a criterion. They can have a maximum execution time, be associated with actions or decision making by the operator ensuring a uniform and consistent response.



Alerts

All alerts and their status can be displayed in a clear and organized way from the installation map. Incidents are recorded by means of a priority and criticality status register.



User roles

The administrator establishes the user roles and customizes which options will be visible or enabled for the different types of users.

Energy efficiency and building management (BMS)

SCATI SENTRY is the software platform that unifies the different security subsystems but also integrates other fire, industrial, HVAC, lighting and energy control systems so that our customers can manage in a simple, efficient and unified way all the information coming from different subsystems, whether security or building control.

This application optimizes energy consumption, reduces costs and reduces carbon emissions. In this way, we can make efficient use of resources, carry out preventive and corrective maintenance actions, contribute to environmental care and help companies meet sustainability objectives.



With SCATI SENTRY, you can optimize operating costs without compromising service quality by programming adjustments to lighting, climate control and other systems.



Incident response generation (security, air conditioning, etc.) to ensure optimal operation of systems and minimize maintenance work.



Centralized access management to allow access only to authorized personnel in sensitive areas, monitoring the capacity in real time and offering a personalized service to VIP clients.



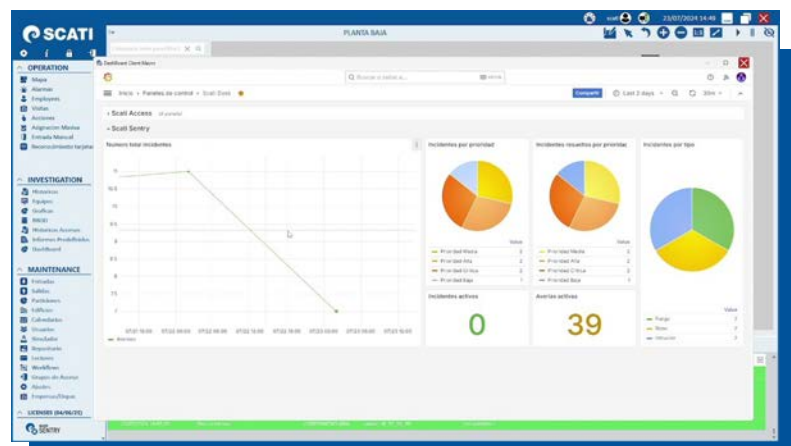
Fire and leak prevention through sensor management for fast and efficient response, minimizing damage and ensuring the well-being of visitors and employees.

Graphs and dashboards

Dashboards display the most relevant data of the installation regarding the different types of incidents: number of active alarms, breakdowns, consumption, etc. If the events have associated cameras, it is possible to access their recording.

Data can be visualized through graphs by time interval. This tool also allows the operator to filter the information to be obtained through the most relevant indicators, as well as to export the information obtained to different formats (PDF, Excel, CSV, etc.).

In those installations that have sensor data, the operator can create dashboards to visualize the data in the form of a barometer or real-time graph.



An edition for every need

Each installation is unique and therefore its needs in terms of the integration of its different subsystems must be adapted to each project.

Our SCATI SENTRY systems integration platform offers you the complete solution you need to manage your entire installation from a single application, ensuring complete control of it, offering a quick response in case of incidents.

Take the leap towards a new concept of integral management of your facilities.



The PRO edition is oriented to the local control of medium and large buildings, in which there is a set of subsystems to be integrated.



The CORPORATE edition is aimed at large corporations where centralized control offers competitive advantages and simplifies operational tasks.

Automation devices



SDIO-12 (E/S)

Input/output devices and physical controllers play an essential role in system integration, allowing integration software to connect to and control the physical world.

By collecting real-time data, enabling precise control, detecting events and improving efficiency, these devices provide an invaluable set of benefits.



SMC-SENTRY (CONTROLLER)

The controllers, on the other hand, increase reliability, availability and local processing capacity, ensuring optimum performance in a variety of applications.

Together, these components enhance the ability of system integration solutions to create more secure, efficient and adaptive environments.



SCATI

BEYOND SECURITY



**Technological
pioneers**



**Consulting
experts**



**Global
expertise**



Headquartered in Spain, SCATI has subsidiaries in Mexico and Brazil, and also has a wide network of Certified Partners that offer services locally, with the same levels of quality and commitment that characterize the company.



www.scati.com